



ESTD-2005

The Jamner Taluka Education Society's

SHREE SURESHDADA JAIN INSTITUTE OF PHARMACEUTICAL EDUCATION & RESEARCH, JAMNER, -424206 DIST- JALGAON (M.S.)

- Approved by PCI, New Delhi & DTE, Mumbai
- Affiliated to K.B.C. N.M.U., Jalgaon
- Courses available :- B.Pharmacy & M. Pharmacy (Pharmaceutics)

Ph. : (02580)233478 Fax (02580)233478,

Website. : www.ssjiiper.com Email :- ssjiiper_jamner@rediffmail.com

ICT TOOL OF COLLEGE USED BY TEACHING AND NON-TEACHING STAFF MEMBERS:

Sr.No.	Name of Staff members	ICT Tool used Yes/No
1.	Dr. S. M. Sarode	Yes
2.	Prof. M.M. Bari	Yes
3.	Prof. Y. M. Bagad	Yes
4.	Prof. P. A. Borse	Yes
5.	Prof. R. D. Shimpi	Yes
6.	Prof. R.S. Wagh	Yes
7.	Prof. P. S. Nawal	Yes
8.	Prof. M. S. Jain	Yes
9.	Prof. M. N. Sanghavi	Yes
10.	Prof. S. J. Tadvi	Yes
11.	Prof. S. B. Rathod	Yes
12.	Prof. P.S. Mahajan	Yes
13.	Prof. S. B. Borase	Yes
14.	Prof. J.S. Shaikh	Yes
15.	Prof. C.V Jaiswal	Yes
16.	Prof. T. S. Chordiya	Yes
17.	Prof. S.A. Patil	Yes
18.	Mr. D. R. Patil	Yes
19.	Mr. C. P. Joshi	Yes



PRINCIPAL

Shree Sureshdada Jain Inst. of Pharmaceutical Education & Research, Jamner, Dist. Jalgaon

- Approved by PCI, New Delhi & DTE, Mumbai
- Affiliated to K.B.C. N.M.U., Jalgaon
- Courses available :- B.Pharmacy & M. Pharmacy (Pharmaceutics)

Ph. : (02580)233478 Fax (02580)233478,

Website. : www.ssjiiper.com Email :- ssjiiper_jamner@rediffmail.com



ESTD-2005

Sr.No.	Name of Staff members	LCD Projector Yes/No	Google meet Yes/No	Zoom meeting Yes/No	Chem draw Yes/No	Ex-Pharmacology Yes/No	Saral-Lib Yes/No
1.	Dr. S. M. Sarode	Yes	Yes	Yes			
2.	Prof. M.M. Bari	Yes	Yes	Yes			
3.	Prof. Y. M. Bagad	Yes	Yes	Yes			
4.	Prof. P. A. Borse	Yes	Yes	Yes			
5.	Prof. R. D. Shimpi	Yes	Yes	Yes		Yes	
6.	Prof. R.S. Wagh	Yes	Yes	Yes	Yes		
7.	Prof. P. S. Nawal	Yes	Yes	Yes		Yes	
8.	Prof. M. S. Jain	Yes	Yes	Yes	Yes		
9.	Prof. M. N. Sanghavi	Yes	Yes	Yes			
10.	Prof. S. J. Tadvi	Yes	Yes	Yes			
11.	Prof. S. B. Rathod	Yes	Yes	Yes			
12.	Prof. P.S. Mahajan	Yes	Yes	Yes			
13.	Prof. S. B. Borase	Yes	Yes	Yes			
14.	Prof. J.S. Shaikh	Yes	Yes	Yes			
15.	Prof. C.V Jaiswal	Yes	Yes	Yes			
16.	Prof. T. S. Chordiya	Yes	Yes	Yes		Yes	
17.	Prof. S.A. Patil	Yes	Yes	Yes			
18.	Mr. D. R. Patil						Yes
19.	Mr. C. P. Joshi						Yes



(Signature)
PRINCIPAL

Shree Sureshdada Jain Inst. of Pharmaceutical Education & Research, Jamner, Dist. Jalgaon



ESTD-2005

The Jamner Taluka Education Society's

SHREE SURESHDADA JAIN INSTITUTE OF PHARMACEUTICAL EDUCATION & RESEARCH, JAMNER, -424206 DIST- JALGAON (M.S.)

- Approved by PCI, New Delhi & DTE, Mumbai
- Affiliated to K.B.C. N.M.U., Jalgaon
- Courses available :- B.Pharmacy & M. Pharmacy (Pharmaceutics)

Ph. : (02580)233478 Fax (02580)233478,

Website. : www.ssjiiper.com Email :- ssjiiper_jamner@rediffmail.com

I. Streaming Software:

1. LCD Projector:

The entire faculty members were using the LCD projector to show PowerPoint presentation in the class room for teaching.

All B.Pharm and M.Pharm classes have facilities to connect with LCD Projector & are used by faculty members to providing interactive lecture platform to whereby share different forms of media including power point presentation. photographs, graphs and charts etc are used to understanding of contents.



PRINCIPAL

Shree Sureshdada Jain Inst. of Pharmaceutical Education & Research, Jamner, Dist. Jalgaon



ESTD-2005

The Jamner Taluka Education Society's

SHREE SURESHDADA JAIN INSTITUTE OF PHARMACEUTICAL EDUCATION & RESEARCH, JAMNER, -424206 DIST- JALGAON (M.S.)

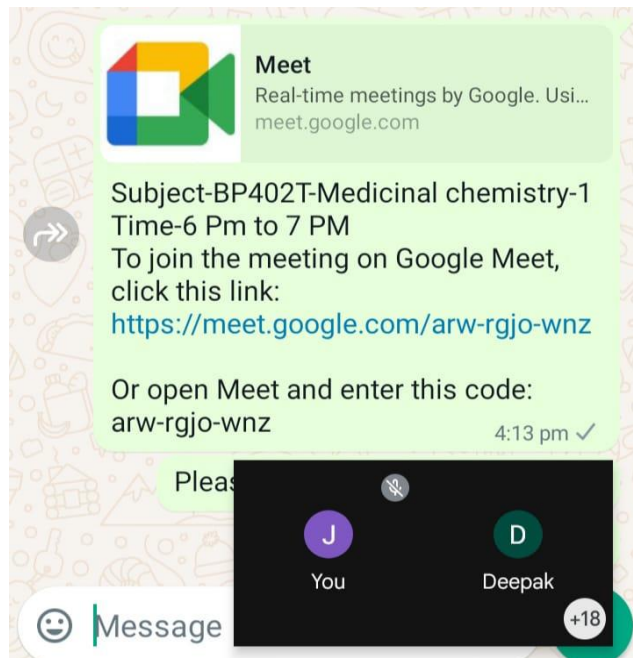
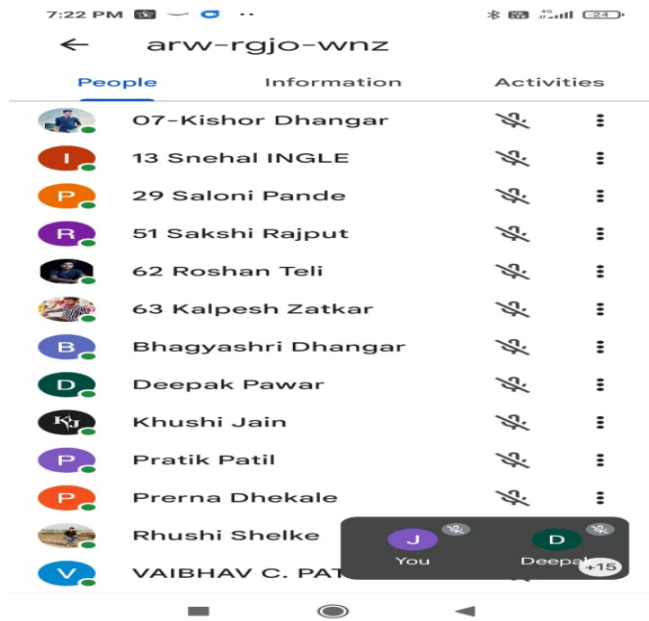
- Approved by PCI, New Delhi & DTE, Mumbai
- Affiliated to K.B.C. N.M.U., Jalgaon
- Courses available :- B.Pharmacy & M. Pharmacy (Pharmaceutics)

Ph. : (02580)233478 Fax (02580)233478,

Website. : www.ssjipec.com Email :- ssjipec_jamner@rediffmail.com

2. Google Meet:

Free online platform to providing the interactive platform whereby different forms of media including power point presentation, photographs, video, graphs & charts etc. are used to understanding of content. All the staff member were using this software to conduct the online or offline theory lectures as per individual's requirements.



3. Zoom meeting:



PRINCIPAL
Shree Sureshdada Jain Inst. of Pharmaceutical
Education & Research, Jamner, Dist. Jalgaon

- Approved by PCI, New Delhi & DTE, Mumbai
- Affiliated to K.B.C. N.M.U., Jalgaon
- Courses available :- B.Pharmacy & M. Pharmacy (Pharmaceutics)

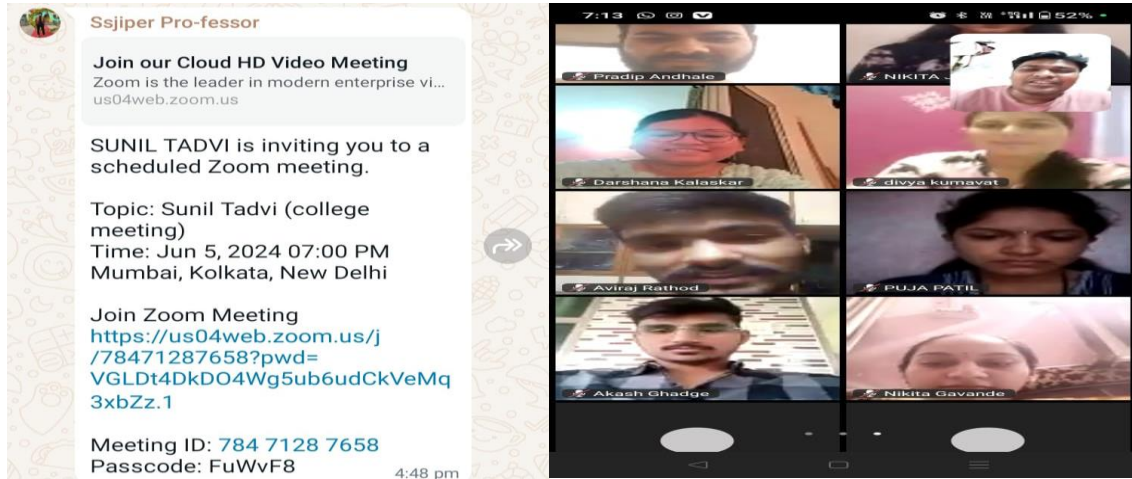
Ph. : (02580)233478 Fax (02580)233478,

Website. : www.ssjiiper.com Email :- ssjiiper_jamner@rediffmail.com



ESTD-2005

Free online platform to providing the interactive platform whereby different forms of media including power point presentation, photographs, video, graphs & charts etc. are used to understanding of content. All the staff member were using this software to conduct the online or offline theory lectures as per individual's requirements.




PRINCIPAL

Shree Sureshdada Jain Inst. of Pharmaceutical Education & Research, Jamner, Dist. Jalgaon



ESTD-2005

The Jamner Taluka Education Society's

SHREE SURESHDADA JAIN INSTITUTE OF PHARMACEUTICAL EDUCATION & RESEARCH, JAMNER, -424206 DIST- JALGAON (M.S.)

- Approved by PCI, New Delhi & DTE, Mumbai
- Affiliated to K.B.C. N.M.U., Jalgaon
- Courses available :- B.Pharmacy & M. Pharmacy (Pharmaceutics)

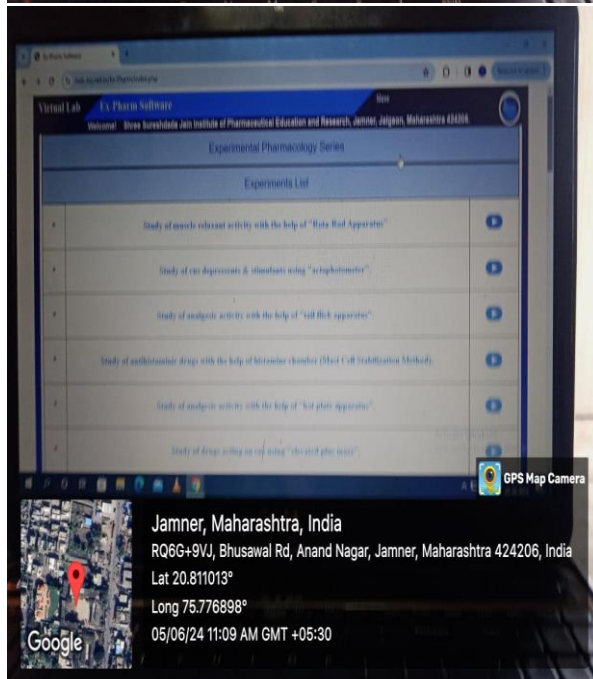
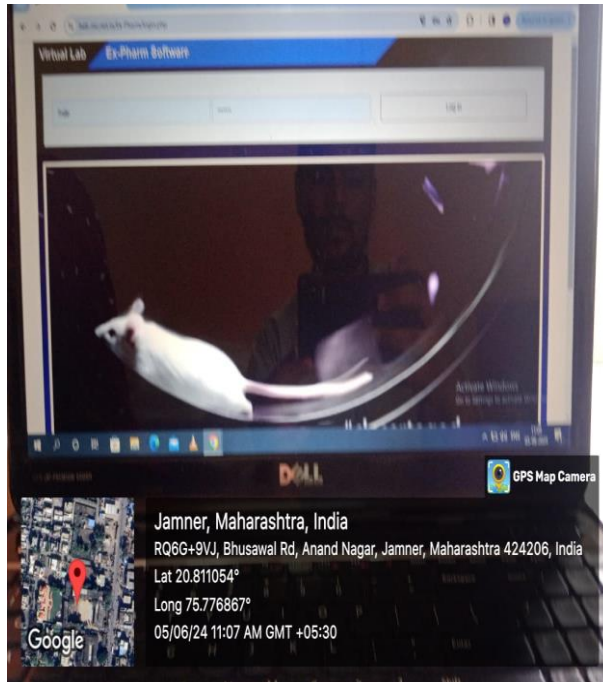
Ph. : (02580)233478 Fax (02580)233478,

Website. : www.ssjiiper.com Email :- ssjiiper_jamner@rediffmail.com

II. Simulation Software:

1.Ex-Pharmacology:

Simulation software like Ex- Pharmacology is used by Pharmacology faculty members in pharmacology laboratory as an alternative or animal practical to demonstrate the effect of drugs on various animal model.




PRINCIPAL
Shree Sureshdada Jain Inst. of Pharmaceutical
Education & Research, Jamner, Dist. Jalgaon



ESTD-2005

The Jamner Taluka Education Society's

SHREE SURESHDADA JAIN INSTITUTE OF PHARMACEUTICAL EDUCATION & RESEARCH, JAMNER, -424206 DIST- JALGAON (M.S.)

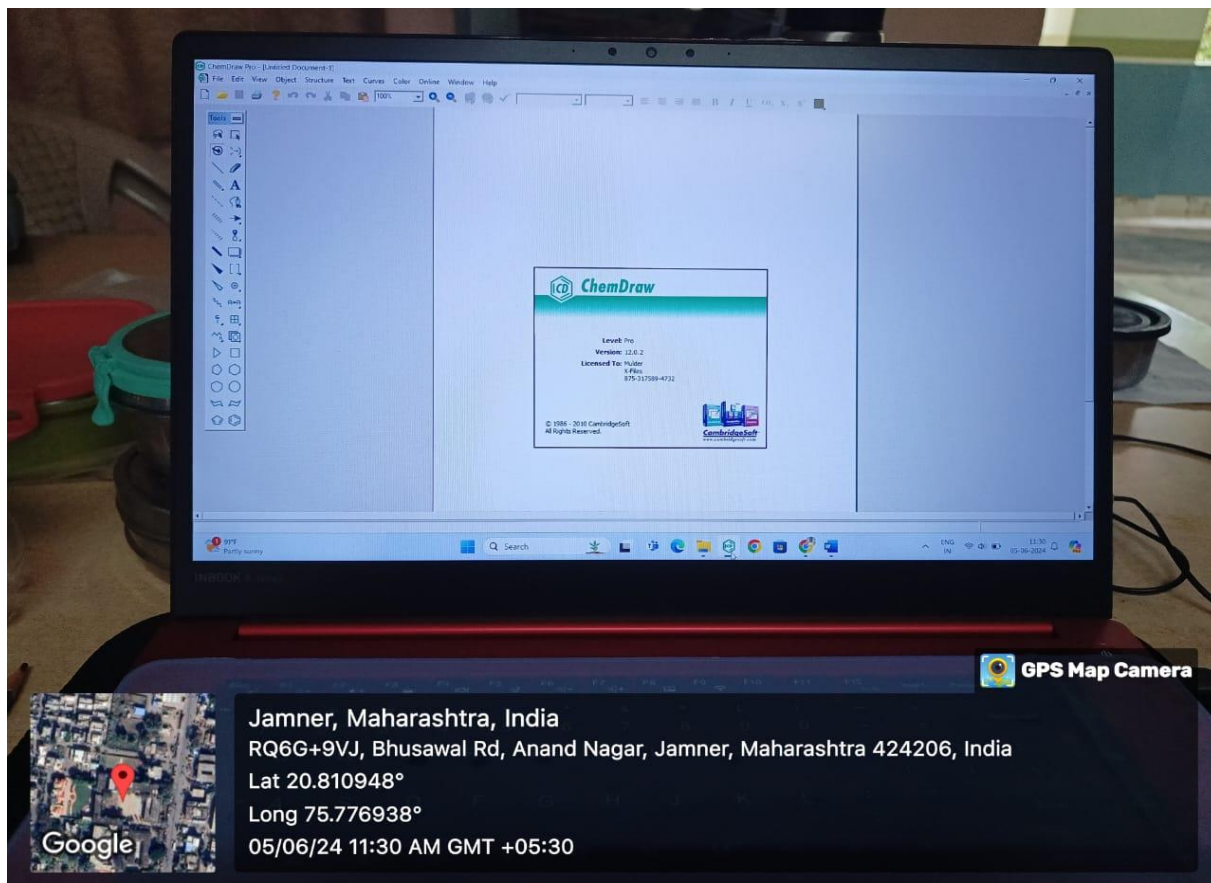
- Approved by PCI, New Delhi & DTE, Mumbai
- Affiliated to K.B.C. N.M.U., Jalgaon
- Courses available :- B.Pharmacy & M. Pharmacy (Pharmaceutics)

Ph. : (02580)233478 Fax (02580)233478,

Website. : www.ssjiiper.com Email :- ssjiiper_jamner@rediffmail.com

2.Chem Draw:

Chem Draw is used by pharmaceutical chemistry faculty members in pharmaceutical chemistry lecture and laboratory as an alternative to draw chemical structure to demonstrate the chemical structure, chemical reaction and chemical mechanism in lecture and practical's.



PRINCIPAL

Shree Sureshdada Jain Inst.of Pharmaceutical Education & Research, Jamner, Dist. Jalgaon



ESTD-2005

The Jamner Taluka Education Society's

SHREE SURESHDADA JAIN INSTITUTE OF PHARMACEUTICAL EDUCATION & RESEARCH, JAMNER, -424206 DIST- JALGAON (M.S.)

- Approved by PCI, New Delhi & DTE, Mumbai
- Affiliated to K.B.C. N.M.U., Jalgaon
- Courses available :- B.Pharmacy & M. Pharmacy (Pharmaceutics)

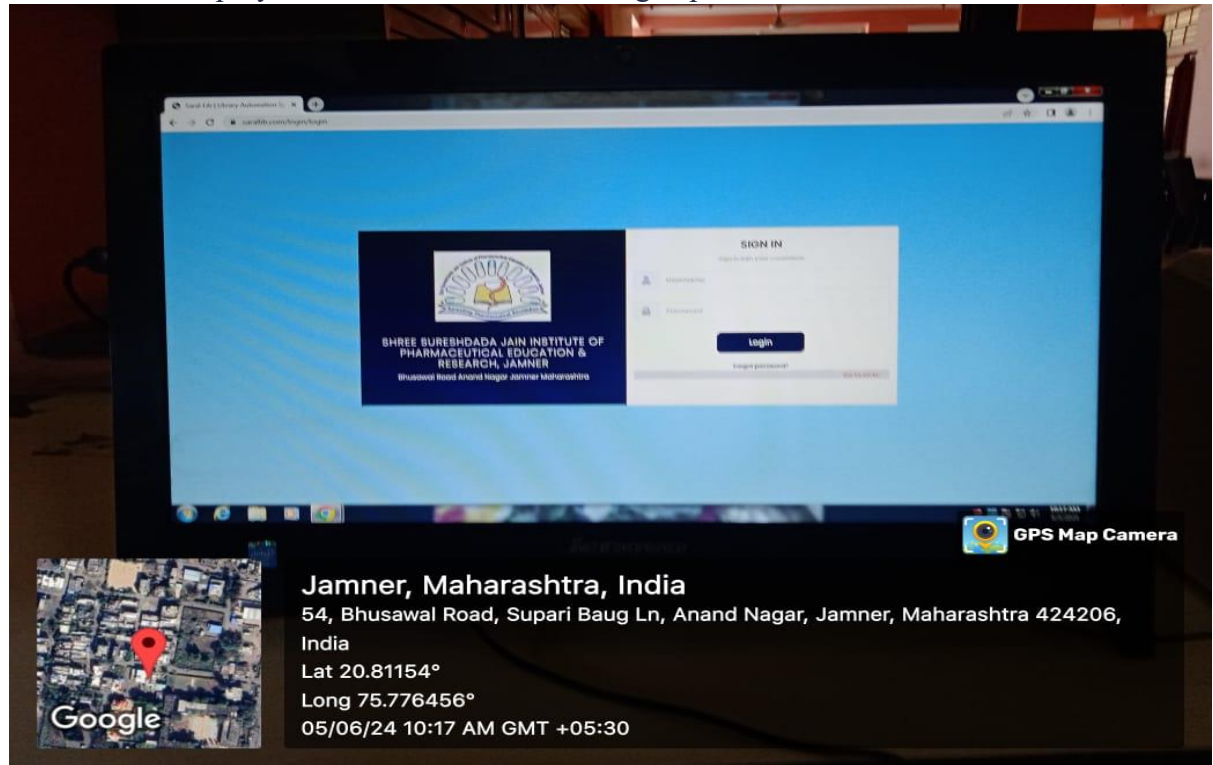
Ph. : (02580)233478 Fax (02580)233478,

Website. : www.ssjiiper.com Email :- ssjiiper_jamner@rediffmail.com

III. Library:

1.Saral-Lib:

Saral libraries Software is providing successful easy interference and handling to the students and employees for enhance their learning experience.



PRINCIPAL

Shree Sureshdada Jain Inst.of Pharmaceutical Education & Research, Jamner, Dist. Jalgaon