



ESTD-2005

The Jamner Taluka Education Society's

**SHREE SURESHDADA JAIN INSTITUTE OF PHARMACEUTICAL  
EDUCATION & RESEARCH, JAMNER, -424206 DIST- JALGAON (M.S.)**

- Approved by PCI, New Delhi & DTE, Mumbai
- Affiliated to K.B.C. N.M.U., Jalgaon
- Courses available :- B.Pharmacy & M. Pharmacy (Pharmaceutics)

Ph. : (02580)233478 Fax (02580)233478,

Website. : [www.ssjiiper.com](http://www.ssjiiper.com) Email :- [ssjiiper\\_jamner@rediffmail.com](mailto:ssjiiper_jamner@rediffmail.com)

1 Research Infrastructure And Facilities

- Central Instrument Laboratories
- Analysis Laboratories
- Medicinal Garden
- Library
- Computer Lab With Internet Connection



**PRINCIPAL**

Shree Sureshdada Jain Inst. of Pharmaceutical  
Education & Research, Jamner, Dist. Jalgaon



ESTD-2005

The Jamner Taluka Education Society's

**SHREE SURESHDADA JAIN INSTITUTE OF PHARMACEUTICAL  
EDUCATION & RESEARCH, JAMNER, -424206 DIST- JALGAON (M.S.)**

- Approved by PCI, New Delhi & DTE, Mumbai
- Affiliated to K.B.C. N.M.U., Jalgaon
- Courses available :- B.Pharmacy & M. Pharmacy (Pharmaceutics)

Ph. : (02580)233478 Fax (02580)233478,

Website. : [www.ssjipec.com](http://www.ssjipec.com) Email :- [ssjipec\\_jamner@rediffmail.com](mailto:ssjipec_jamner@rediffmail.com)

### Central Instrument Laboratories



Central Instrument Room (UG)



CENTRAL INSTRUMENT ROOM (PG)



**PRINCIPAL**

Shree Sureshdada Jain Inst. of Pharmaceutical  
Education & Research, Jamner, Dist. Jalgaon



ESTD-2005

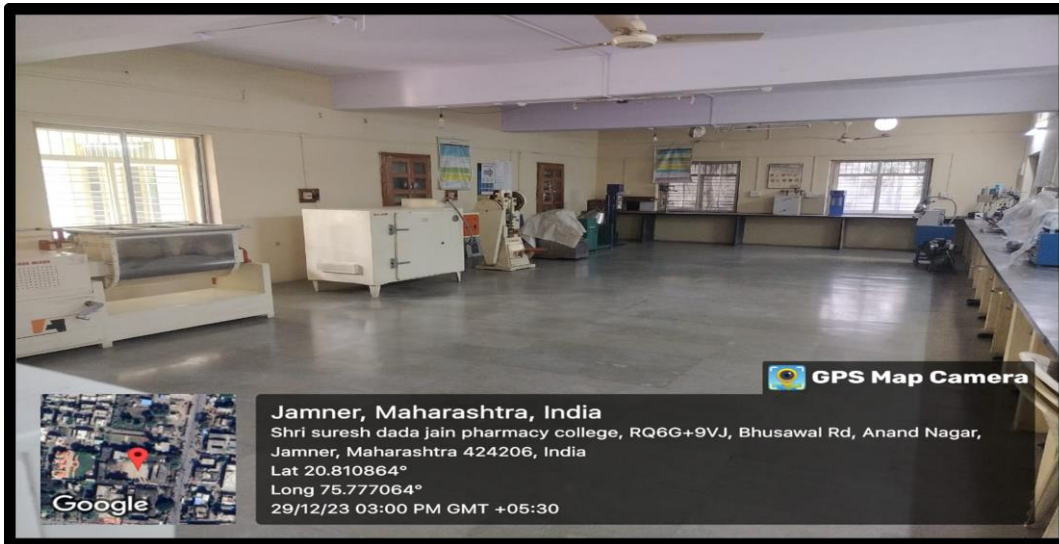
The Jamner Taluka Education Society's

## SHREE SURESHDADA JAIN INSTITUTE OF PHARMACEUTICAL EDUCATION & RESEARCH, JAMNER, -424206 DIST- JALGAON (M.S.)

- Approved by PCI, New Delhi & DTE, Mumbai
- Affiliated to K.B.C. N.M.U., Jalgaon
- Courses available :- B.Pharmacy & M. Pharmacy (Pharmaceutics)

Ph. : (02580)233478 Fax (02580)233478,

Website. : [www.ssjipec.com](http://www.ssjipec.com) Email :- [ssjipec\\_jamner@rediffmail.com](mailto:ssjipec_jamner@rediffmail.com)



### MACHINE ROOM



### PHARMACOGNOSY LAB-I



PRINCIPAL

Shree Sureshdada Jain Inst. of Pharmaceutical Education & Research, Jamner, Dist. Jalgaon





ESTD-2005

The Jamner Taluka Education Society's

## SHREE SURESHDADA JAIN INSTITUTE OF PHARMACEUTICAL EDUCATION & RESEARCH, JAMNER, -424206 DIST- JALGAON (M.S.)

- Approved by PCI, New Delhi & DTE, Mumbai
- Affiliated to K.B.C. N.M.U., Jalgaon
- Courses available :- B.Pharmacy & M. Pharmacy (Pharmaceutics)

Ph. : (02580)233478 Fax (02580)233478,

Website. : [www.ssjipecr.com](http://www.ssjipecr.com) Email :- [ssjipecr\\_jamner@rediffmail.com](mailto:ssjipecr_jamner@rediffmail.com)



### PHARMACEUTICAL CHEMISTRY -I



### PHARMACEUTICAL CHEMISTRY -II



PRINCIPAL

Shree Sureshdada Jain Inst. of Pharmaceutical Education & Research, Jamner, Dist. Jalgaon



ESTD-2005

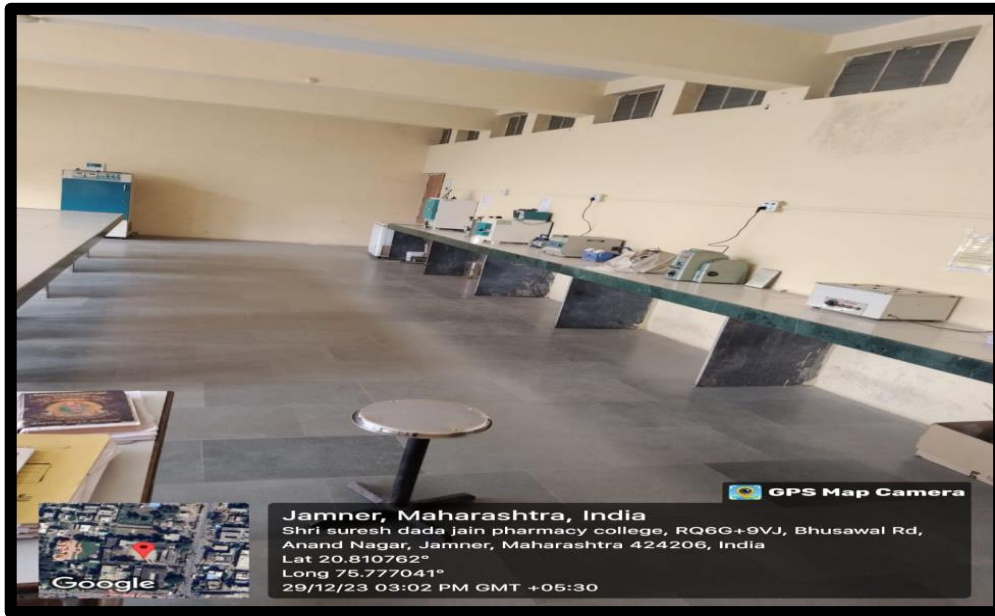
The Jamner Taluka Education Society's

## SHREE SURESHDADA JAIN INSTITUTE OF PHARMACEUTICAL EDUCATION & RESEARCH, JAMNER, -424206 DIST- JALGAON (M.S.)

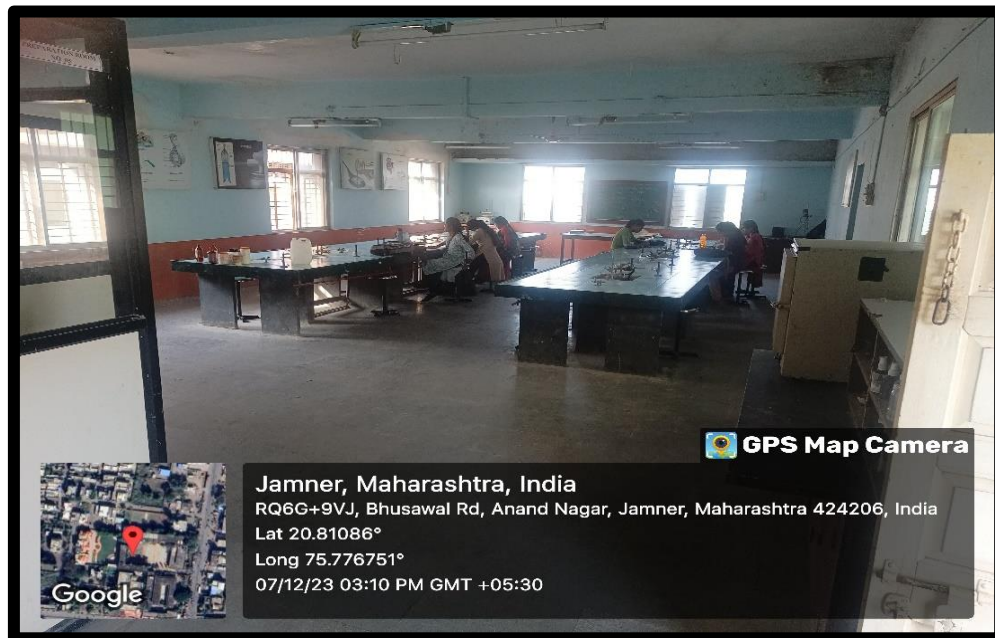
- Approved by PCI, New Delhi & DTE, Mumbai
- Affiliated to K.B.C. N.M.U., Jalgaon
- Courses available :- B.Pharmacy & M. Pharmacy (Pharmaceutics)

Ph. : (02580)233478 Fax (02580)233478,

Website. : [www.ssjipec.com](http://www.ssjipec.com) Email :- [ssjipec\\_jamner@rediffmail.com](mailto:ssjipec_jamner@rediffmail.com)



P'COGNOSY LAB-II



PHARMACEUTICS-II





PRINCIPAL

Shree Sureshdada Jain Inst. of Pharmaceutical Education & Research, Jamner, Dist. Jalgaon





ESTD-2005

The Jamner Taluka Education Society's

**SHREE SURESHDADA JAIN INSTITUTE OF PHARMACEUTICAL EDUCATION & RESEARCH, JAMNER, -424206 DIST- JALGAON (M.S.)**

- Approved by PCI, New Delhi & DTE, Mumbai
- Affiliated to K.B.C. N.M.U., Jalgaon
- Courses available :- B.Pharmacy & M. Pharmacy (Pharmaceutics)

Ph. : (02580)233478 Fax (02580)233478,

Website. : [www.ssjipecr.com](http://www.ssjipecr.com) Email :- [ssjipecr\\_jamner@rediffmail.com](mailto:ssjipecr_jamner@rediffmail.com)



**PG LAB-I (P'CEUTICS)**



**PREPARATION ROOM (PG)**



**PRINCIPAL**

Shree Sureshdada Jain Inst. of Pharmaceutical Education & Research, Jamner, Dist. Jalgaon



ESTD-2005

The Jamner Taluka Education Society's

**SHREE SURESHDADA JAIN INSTITUTE OF PHARMACEUTICAL EDUCATION & RESEARCH, JAMNER, -424206 DIST- JALGAON (M.S.)**

- Approved by PCI, New Delhi & DTE, Mumbai
- Affiliated to K.B.C. N.M.U., Jalgaon
- Courses available :- B.Pharmacy & M. Pharmacy (Pharmaceutics)

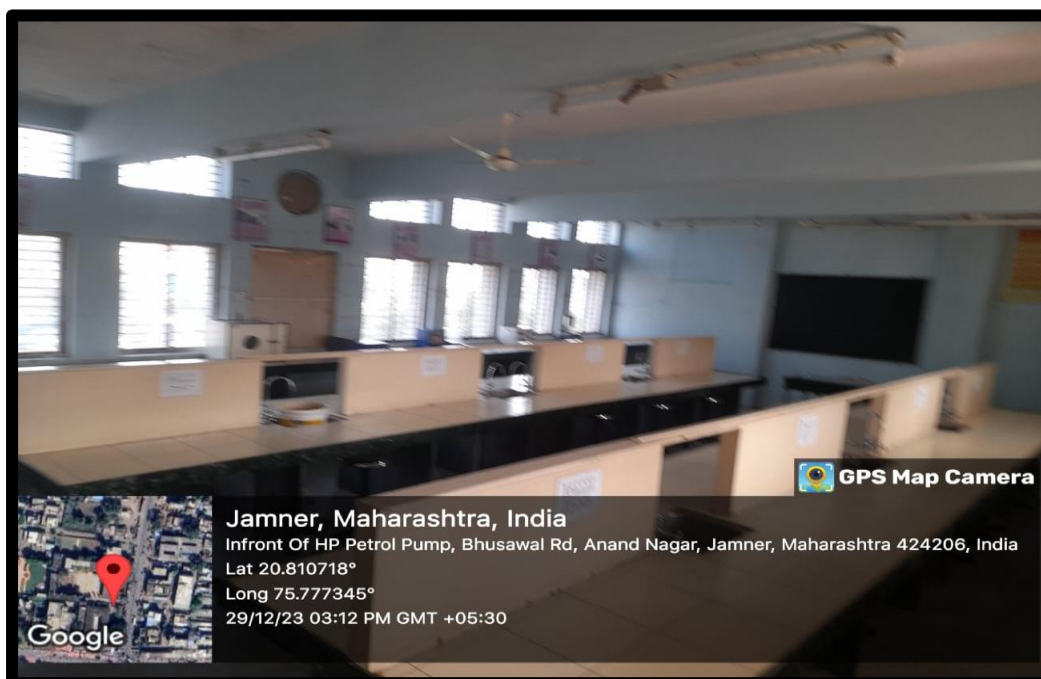
Ph. : (02580)233478 Fax (02580)233478,

Website. : [www.ssjipec.com](http://www.ssjipec.com) Email :- [ssjipec\\_jamner@rediffmail.com](mailto:ssjipec_jamner@rediffmail.com)

**PG LAB-II**



**P'COLOGY LAB-I**



*(Handwritten Signature)*

**PRINCIPAL**

Shree Sureshdada Jain Inst. of Pharmaceutical Education & Research, Jamner, Dist. Jalgaon





ESTD-2005

The Jamner Taluka Education Society's

## SHREE SURESHDADA JAIN INSTITUTE OF PHARMACEUTICAL EDUCATION & RESEARCH, JAMNER, -424206 DIST- JALGAON (M.S.)

- Approved by PCI, New Delhi & DTE, Mumbai
- Affiliated to K.B.C. N.M.U., Jalgaon
- Courses available :- B.Pharmacy & M. Pharmacy (Pharmaceutics)

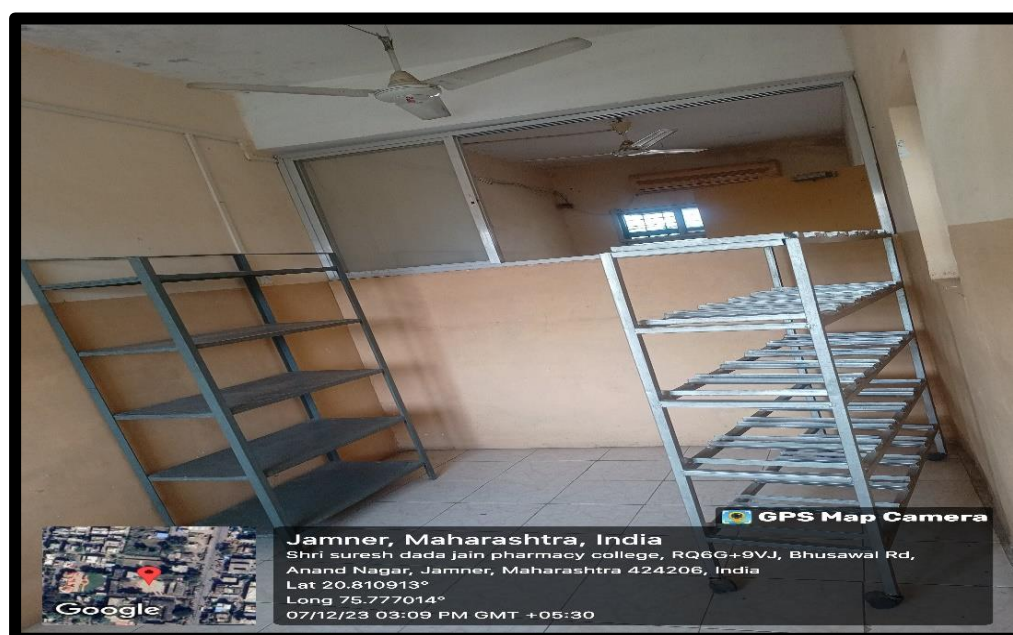
Ph. : (02580)233478 Fax (02580)233478,

Website. : [www.ssjipecr.com](http://www.ssjipecr.com) Email :- [ssjipecr\\_jamner@rediffmail.com](mailto:ssjipecr_jamner@rediffmail.com)

### P'COLOGY LAB-II



### ANIMAL HOUSE-I



PRINCIPAL

Shree Sureshdada Jain Inst. of Pharmaceutical Education & Research, Jamner, Dist. Jalgaon





ESTD-2005

The Jamner Taluka Education Society's

**SHREE SURESHDADA JAIN INSTITUTE OF PHARMACEUTICAL EDUCATION & RESEARCH, JAMNER, -424206 DIST- JALGAON (M.S.)**

- Approved by PCI, New Delhi & DTE, Mumbai
- Affiliated to K.B.C. N.M.U., Jalgaon
- Courses available :- B.Pharmacy & M. Pharmacy (Pharmaceutics)

Ph. : (02580)233478 Fax (02580)233478,

Website. : [www.ssjipecr.com](http://www.ssjipecr.com) Email :- [ssjipecr\\_jamner@rediffmail.com](mailto:ssjipecr_jamner@rediffmail.com)



**PRINCIPAL**

Shree Sureshdada Jain Inst. of Pharmaceutical Education & Research, Jamner, Dist. Jalgaon



ESTD-2005

The Jamner Taluka Education Society's

## SHREE SURESHDADA JAIN INSTITUTE OF PHARMACEUTICAL EDUCATION & RESEARCH, JAMNER, -424206 DIST- JALGAON (M.S.)

- Approved by PCI, New Delhi & DTE, Mumbai
- Affiliated to K.B.C. N.M.U., Jalgaon
- Courses available :- B.Pharmacy & M. Pharmacy (Pharmaceutics)

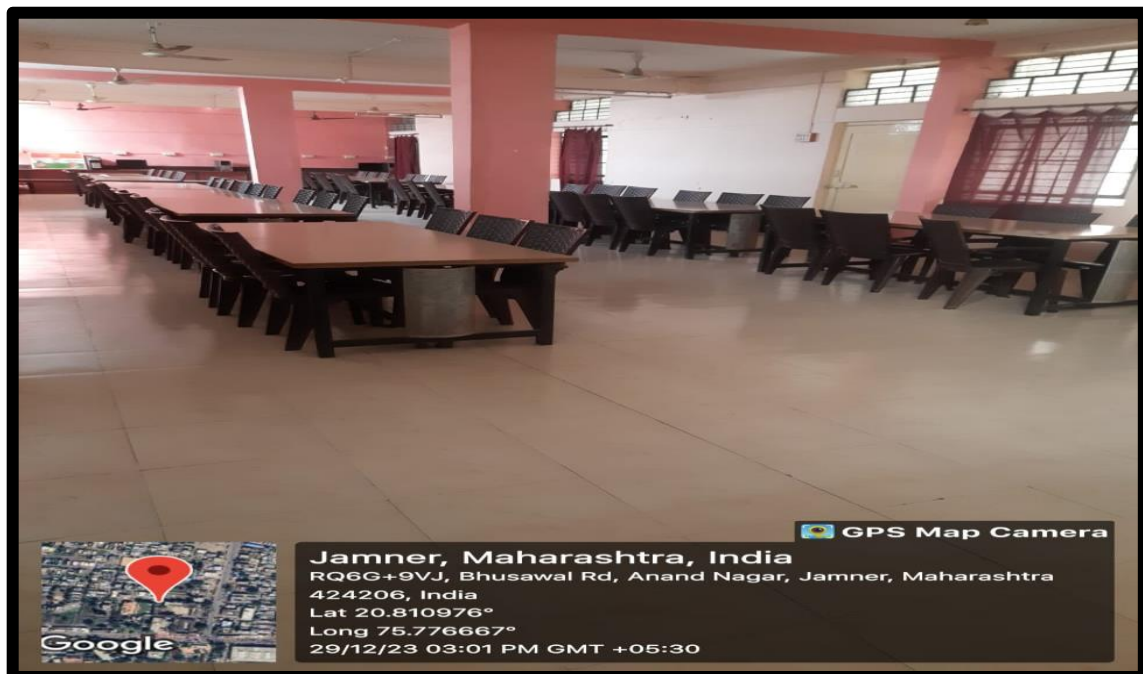
Ph. : (02580)233478 Fax (02580)233478,

Website. : [www.ssjipec.com](http://www.ssjipec.com) Email :- [ssjipec\\_jamner@rediffmail.com](mailto:ssjipec_jamner@rediffmail.com)



Jamner, Maharashtra, India  
RQ6G+9VJ, Bhusawal Rd, Anand Nagar, Jamner, Maharashtra 424206, India  
Lat 20.810764°  
Long 75.776829°  
07/12/23 11:26 AM GMT +05:30

### LIBRARY



Jamner, Maharashtra, India  
RQ6G+9VJ, Bhusawal Rd, Anand Nagar, Jamner, Maharashtra  
424206, India  
Lat 20.810976°  
Long 75.776667°  
29/12/23 03:01 PM GMT +05:30

### LIBRARY READING ROOM



PRINCIPAL

Shree Sureshdada Jain Inst. of Pharmaceutical  
Education & Research, Jamner, Dist. Jalgaon





ESTD-2005

The Jamner Taluka Education Society's

## SHREE SURESHDADA JAIN INSTITUTE OF PHARMACEUTICAL EDUCATION & RESEARCH, JAMNER, -424206 DIST- JALGAON (M.S.)

- Approved by PCI, New Delhi & DTE, Mumbai
- Affiliated to K.B.C. N.M.U., Jalgaon
- Courses available :- B.Pharmacy & M. Pharmacy (Pharmaceutics)

Ph. : (02580)233478 Fax (02580)233478,

Website. : [www.ssjipecr.com](http://www.ssjipecr.com) Email :- [ssjipecr\\_jamner@rediffmail.com](mailto:ssjipecr_jamner@rediffmail.com)



### COMPUTER ROOM



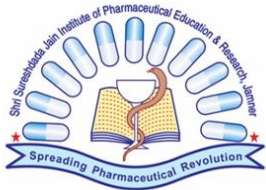
### PHARMACEUTICS-II



PRINCIPAL

Shree Sureshdada Jain Inst. of Pharmaceutical Education & Research, Jamner, Dist. Jalgaon





ESTD-2005

The Jamner Taluka Education Society's

## SHREE SURESHDADA JAIN INSTITUTE OF PHARMACEUTICAL EDUCATION & RESEARCH, JAMNER, -424206 DIST- JALGAON (M.S.)

- Approved by PCI, New Delhi & DTE, Mumbai
- Affiliated to K.B.C. N.M.U., Jalgaon
- Courses available :- B.Pharmacy & M. Pharmacy (Pharmaceutics)

Ph. : (02580)233478 Fax (02580)233478,

Website. : [www.ssjiper.com](http://www.ssjiper.com) Email :- [ssjiper\\_jamner@rediffmail.com](mailto:ssjiper_jamner@rediffmail.com)



HPLC



FTIR

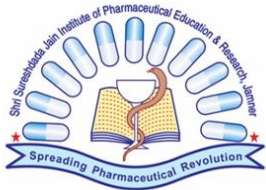


*[Signature]*

PRINCIPAL

Shree Sureshdada Jain Inst. of Pharmaceutical Education & Research, Jamner, Dist. Jalgaon





ESTD-2005

The Jamner Taluka Education Society's

## SHREE SURESHDADA JAIN INSTITUTE OF PHARMACEUTICAL EDUCATION & RESEARCH, JAMNER, -424206 DIST- JALGAON (M.S.)

- Approved by PCI, New Delhi & DTE, Mumbai
- Affiliated to K.B.C. N.M.U., Jalgaon
- Courses available :- B.Pharmacy & M. Pharmacy (Pharmaceutics)

Ph. : (02580)233478 Fax (02580)233478,

Website. : [www.ssjiper.com](http://www.ssjiper.com) Email :- [ssjiper\\_jamner@rediffmail.com](mailto:ssjiper_jamner@rediffmail.com)



### UV-VISIBLE



### DIFFUSION CELL APPARATUS



PRINCIPAL

Shree Sureshdada Jain Inst. of Pharmaceutical Education & Research, Jamner, Dist. Jalgaon





ESTD-2005

The Jamner Taluka Education Society's

## SHREE SURESHDADA JAIN INSTITUTE OF PHARMACEUTICAL EDUCATION & RESEARCH, JAMNER, -424206 DIST- JALGAON (M.S.)

- Approved by PCI, New Delhi & DTE, Mumbai
- Affiliated to K.B.C. N.M.U., Jalgaon
- Courses available :- B.Pharmacy & M. Pharmacy (Pharmaceutics)

Ph. : (02580)233478 Fax (02580)233478,

Website. : [www.ssjipecr.com](http://www.ssjipecr.com) Email :- [ssjipecr\\_jamner@rediffmail.com](mailto:ssjipecr_jamner@rediffmail.com)



### DISSOLUTION TEST APPARATUS



### DISINTIGATION APPARATUS



PRINCIPAL

Shree Sureshdada Jain Inst. of Pharmaceutical Education & Research, Jamner, Dist. Jalgaon





ESTD-2005

The Jamner Taluka Education Society's

**SHREE SURESHDADA JAIN INSTITUTE OF PHARMACEUTICAL EDUCATION & RESEARCH, JAMNER, -424206 DIST- JALGAON (M.S.)**

- Approved by PCI, New Delhi & DTE, Mumbai
- Affiliated to K.B.C. N.M.U., Jalgaon
- Courses available :- B.Pharmacy & M. Pharmacy (Pharmaceutics)

Ph. : (02580)233478 Fax (02580)233478,

Website. : [www.ssjiper.com](http://www.ssjiper.com) Email :- [ssjiper\\_jamner@rediffmail.com](mailto:ssjiper_jamner@rediffmail.com)



**MULTITOOLING TABLET PUNCHING MACHINE**



**LAB TABLET PRESS**



**PRINCIPAL**

Shree Sureshdada Jain Inst. of Pharmaceutical Education & Research, Jamner, Dist. Jalgaon



ESTD-2005

The Jamner Taluka Education Society's

**SHREE SURESHDADA JAIN INSTITUTE OF PHARMACEUTICAL  
EDUCATION & RESEARCH, JAMNER, -424206 DIST- JALGAON (M.S.)**

- Approved by PCI, New Delhi & DTE, Mumbai
- Affiliated to K.B.C. N.M.U., Jalgaon
- Courses available :- B.Pharmacy & M. Pharmacy (Pharmaceutics)

Ph. : (02580)233478 Fax (02580)233478,

Website. : [www.ssjipecr.com](http://www.ssjipecr.com) Email :- [ssjipecr\\_jamner@rediffmail.com](mailto:ssjipecr_jamner@rediffmail.com)



**DOUBLE CONE BLENDER**



**TENSILE STRENGTH TESTER**



**PRINCIPAL**

Shree Sureshdada Jain Inst. of Pharmaceutical  
Education & Research, Jamner, Dist. Jalgaon





ESTD-2005

The Jamner Taluka Education Society's

**SHREE SURESHDADA JAIN INSTITUTE OF PHARMACEUTICAL  
EDUCATION & RESEARCH, JAMNER, -424206 DIST- JALGAON (M.S.)**

- Approved by PCI, New Delhi & DTE, Mumbai
- Affiliated to K.B.C. N.M.U., Jalgaon
- Courses available :- B.Pharmacy & M. Pharmacy (Pharmaceutics)

Ph. : (02580)233478 Fax (02580)233478,

Website. : [www.ssjiiper.com](http://www.ssjiiper.com) Email :- [ssjiiper\\_jamner@rediffmail.com](mailto:ssjiiper_jamner@rediffmail.com)



**DISTILATION UNIT**



**OSCILLATING GRANULATOR**



*[Signature]*

**PRINCIPAL**

Shree Sureshdada Jain Inst. of Pharmaceutical  
Education & Research, Jamner, Dist. Jalgaon



ESTD-2005

The Jamner Taluka Education Society's

**SHREE SURESHDADA JAIN INSTITUTE OF PHARMACEUTICAL EDUCATION & RESEARCH, JAMNER, -424206 DIST- JALGAON (M.S.)**

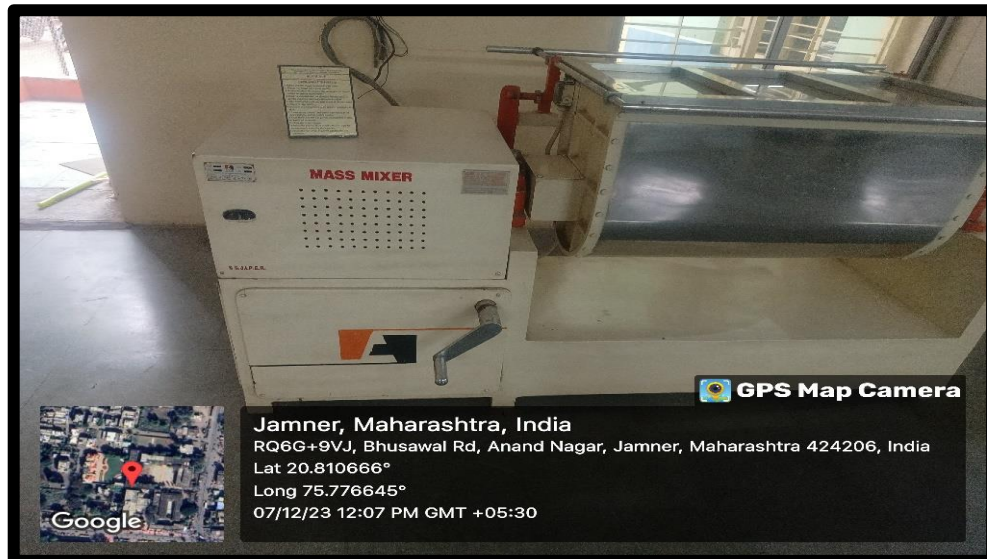
- Approved by PCI, New Delhi & DTE, Mumbai
- Affiliated to K.B.C. N.M.U., Jalgaon
- Courses available :- B.Pharmacy & M. Pharmacy (Pharmaceutics)

Ph. : (02580)233478 Fax (02580)233478,

Website. : [www.ssjipecr.com](http://www.ssjipecr.com) Email :- [ssjipecr\\_jamner@rediffmail.com](mailto:ssjipecr_jamner@rediffmail.com)



**ORBITAL SHAKING INCUBATOR**



**MASS MIXER**





**PRINCIPAL**

Shree Sureshdada Jain Inst. of Pharmaceutical Education & Research, Jamner, Dist. Jalgaon





ESTD-2005

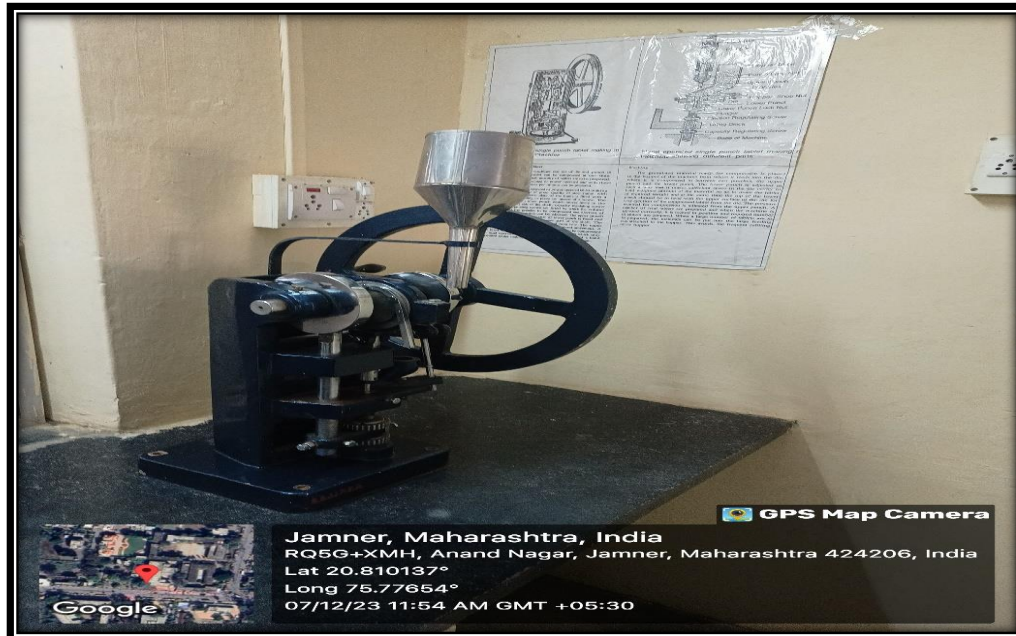
The Jamner Taluka Education Society's

**SHREE SURESHDADA JAIN INSTITUTE OF PHARMACEUTICAL EDUCATION & RESEARCH, JAMNER, -424206 DIST- JALGAON (M.S.)**

- Approved by PCI, New Delhi & DTE, Mumbai
- Affiliated to K.B.C. N.M.U., Jalgaon
- Courses available :- B.Pharmacy & M. Pharmacy (Pharmaceutics)

Ph. : (02580)233478 Fax (02580)233478,

Website. : [www.ssjipec.com](http://www.ssjipec.com) Email :- [ssjipec\\_jamner@rediffmail.com](mailto:ssjipec_jamner@rediffmail.com)



**HAND OPERATED SINGLE PUNCH MACHINE**



**ALL PURPOSE EQUIPMENT**



**PRINCIPAL**

Shree Sureshdada Jain Inst. of Pharmaceutical Education & Research, Jamner, Dist. Jalgaon





ESTD-2005

The Jamner Taluka Education Society's

## SHREE SURESHDADA JAIN INSTITUTE OF PHARMACEUTICAL EDUCATION & RESEARCH, JAMNER, -424206 DIST- JALGAON (M.S.)

- Approved by PCI, New Delhi & DTE, Mumbai
- Affiliated to K.B.C. N.M.U., Jalgaon
- Courses available :- B.Pharmacy & M. Pharmacy (Pharmaceutics)

Ph. : (02580)233478 Fax (02580)233478,

Website. : [www.ssjipec.com](http://www.ssjipec.com) Email :- [ssjipec\\_jamner@rediffmail.com](mailto:ssjipec_jamner@rediffmail.com)



TABLET COATING MACHINE



CAPSULE FILLING MACHINE



PRINCIPAL

Shree Sureshdada Jain Inst. of Pharmaceutical Education & Research, Jamner, Dist. Jalgaon





ESTD-2005

The Jamner Taluka Education Society's

**SHREE SURESHDADA JAIN INSTITUTE OF PHARMACEUTICAL EDUCATION & RESEARCH, JAMNER, -424206 DIST- JALGAON (M.S.)**

- Approved by PCI, New Delhi & DTE, Mumbai
- Affiliated to K.B.C. N.M.U., Jalgaon
- Courses available :- B.Pharmacy & M. Pharmacy (Pharmaceutics)

Ph. : (02580)233478 Fax (02580)233478,

Website. : [www.ssjiiper.com](http://www.ssjiiper.com) Email :- [ssjiiper\\_jamner@rediffmail.com](mailto:ssjiiper_jamner@rediffmail.com)



**BOTTLE FILLING MACHINE**



**TUBE FILLING MACHINE**



*[Signature]*

**PRINCIPAL**

Shree Sureshdada Jain Inst. of Pharmaceutical Education & Research, Jamner, Dist. Jalgaon



ESTD-2005

The Jamner Taluka Education Society's

**SHREE SURESHDADA JAIN INSTITUTE OF PHARMACEUTICAL  
EDUCATION & RESEARCH, JAMNER, -424206 DIST- JALGAON (M.S.)**

- Approved by PCI, New Delhi & DTE, Mumbai
- Affiliated to K.B.C. N.M.U., Jalgaon
- Courses available :- B.Pharmacy & M. Pharmacy (Pharmaceutics)

Ph. : (02580)233478 Fax (02580)233478,

Website. : [www.ssjiper.com](http://www.ssjiper.com) Email :- [ssjiper\\_jamner@rediffmail.com](mailto:ssjiper_jamner@rediffmail.com)



**BALL MILL (1 Kg)**



**TRAY DRYER**



*[Signature]*

**PRINCIPAL**

Shree Sureshdada Jain Inst. of Pharmaceutical  
Education & Research, Jamner, Dist. Jalgaon





ESTD-2005

The Jamner Taluka Education Society's

**SHREE SURESHDADA JAIN INSTITUTE OF PHARMACEUTICAL  
EDUCATION & RESEARCH, JAMNER, -424206 DIST- JALGAON (M.S.)**

- Approved by PCI, New Delhi & DTE, Mumbai
- Affiliated to K.B.C. N.M.U., Jalgaon
- Courses available :- B.Pharmacy & M. Pharmacy (Pharmaceutics)

Ph. : (02580)233478 Fax (02580)233478,

Website. : [www.ssjiper.com](http://www.ssjiper.com) Email :- [ssjiper\\_jamner@rediffmail.com](mailto:ssjiper_jamner@rediffmail.com)



**STABILITY CHAMBER**



**AUOTOCLAVE**



**PRINCIPAL**

Shree Sureshdada Jain Inst. of Pharmaceutical  
Education & Research, Jamner, Dist. Jalgaon